

MAIN

IMPORTANT
GUIDELINES

ABOUT US

ABOUT OUR
PARTNER

ADDITIONAL
RESOURCES /
APPENDIX

MODULE 2
OVERVIEW

LAND
ACKNOWLEDGEMENT

UNDERSTANDING
IDENTITIES
IN THE CLASSROOM

INCORPORATING
TRAUMA-INFORMED
TEACHING

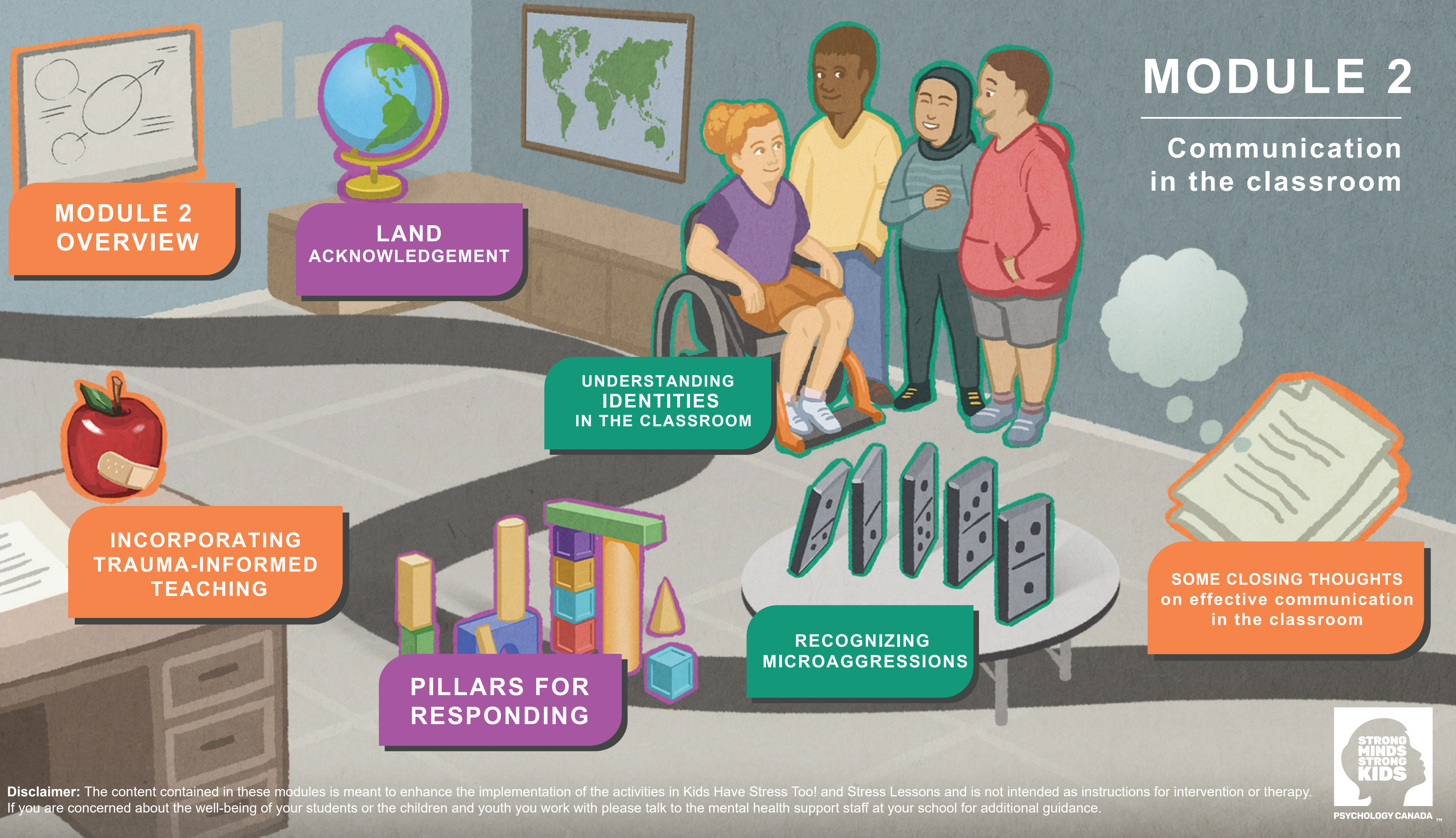
PILLARS FOR
RESPONDING

RECOGNIZING
MICROAGGRESSIONS

SOME CLOSING THOUGHTS
on effective communication
in the classroom

MODULE 2

Communication
in the classroom



Disclaimer: The content contained in these modules is meant to enhance the implementation of the activities in Kids Have Stress Too! and Stress Lessons and is not intended as instructions for intervention or therapy. If you are concerned about the well-being of your students or the children and youth you work with please talk to the mental health support staff at your school for additional guidance.